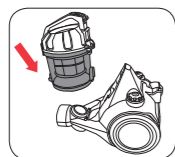
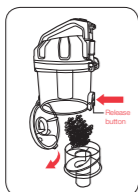
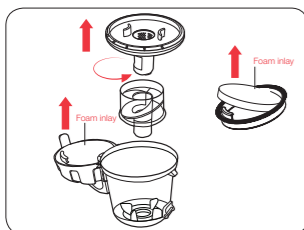


- Grab the dust container by its handle and press the release button to unlock it. Pull the container out of the appliance.
- Hold the dust container over a rubbish bin or bag. Press the dust release button. The bottom lid of the dust container will automatically open, allowing you to empty the container.
- After emptying the dust container, close the bottom lid and replace the container in the appliance. Press the container down in its original position. When you hear a click sound, the dust container is correctly inserted.



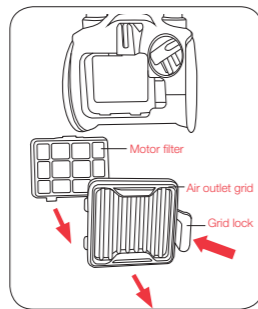
Cleaning the HEPA Filter



- Remove the container.
- Open the top lid by pulling its lock upwards.
- Pull out the cylinder.
- Separate the cylinders from each other by rotating either one of them counter-clockwise.
- If necessary, clean the cylinders and the dust container with a damp cloth or under running water.
- Remove the filter frame from the lid by simply pulling it out.
- Remove the foam inlay.
- Tap the filter frame to remove dust.
- If necessary, rinse the filter frame and the foam inlay under running water.
- To avoid damaging the filter, do not use any tools.

Cleaning the Motor filter

- We recommend to clean the Motor filter about twice a year or when it appears to be dirty.
- The filter is installed behind the air outlet grid. Push the grid lock to the left and pull out the air outlet grid at the same time.
- Slightly press down the lock on the top side of the filter frame and pull out the filter frame.
- Rinse the filter with warm water.
- Let the filter dry completely. Do not expose it to direct sunlight.
- Put the filter back in place and reinstall the air outlet grid.
- Both filter and grid must click into place.



Notice: Never use the appliance without filters installed. This can cause power loss or damage to the appliance.

Contact us

Helpline

If you are having a problem with your appliance, please call our Helpline, as we are more likely to be able to help than the store you purchased the item from.

Please have the product name, model number and serial number to hand when you call to help us deal with your enquiry quicker.

IRE Helpline: **+353 1 8424833**
 Web: www.morphyrichards.com
 Email: ServiceShared@glendimplex.com

Talk To Us

If you have any questions or comments, or want some great tips to help you get the most out of your products, join us online:

Blog: www.morphyrichards.co.uk/blog
 Facebook: www.facebook.com/morphyrichardsuk
 Twitter: www.twitter.com/loveyourmorphy
 Website: www.morphyrichards.com

Registering your 2 year guarantee

Your standard one year guarantee is extended for an additional 12 months when you register the product within 28 days of purchase with Glen Dimplex. If you do not register the product with Glen Dimplex within 28 days, your product is guaranteed for 1 year. To validate your 2 year guarantee register with us online at.

www.glendimplexireland.com/morphyrichards/2yearguaranteeregistration

Or call our customer registration line
+353 1 8424833

N.B. Each qualifying product needs to be registered with Glen Dimplex individually.

Please note that the 2 year guarantee is only available in the UK and Ireland. Please refer to the one year guarantee for more information.

Your 1 year guarantee

To qualify for the one year guarantee, the appliance must have been used according to the instructions supplied.

It is important to retain the retailer's receipt as proof of purchase. Staple your receipt to this back cover for future reference.

Please quote the following information if the product develops a fault. These numbers can be found on the base of the product.

Model no. Serial no.

All Glen Dimplex products are individually tested before leaving the factory. In the unlikely event of any appliance proving to be faulty within 28 days of purchase, it should be returned to the place of purchase for it to be replaced.

If the fault develops after 28 days and within 12 months (2 years if registered) of original purchase, you should contact the Helpline number quoting Model number and Serial number on the product, or write to Glen Dimplex at the address shown.

You may be asked to return a copy of proof of purchase. Subject to the exclusions set out below (see Exclusions), the faulty appliance will then be repaired or replaced and dispatched usually within 7 working days of receipt.

If you suspect a fault, follow the simple checks detailed below before retrying the appliance or calling the helpline.

- Check the filters for blockages and clean.
- Check the tools / tubes for blockages.
- Check the plug is firmly in the socket.
- Check the socket is working by trying another appliance.
- Check the fuse in the plug.

IF YOU ARE HAVING A PROBLEM WITH ONE OF OUR PRODUCTS, CALL OUR HELPLINE:

EIRE: +353 1 8424833

morphyrichards

Glen Dimplex Ireland
 Airport Road
 Cloghran
 Co. Dublin

Helplines (office hours)
 Tel +353 1 8424833
 Email Serviceireland@glendimplex.com

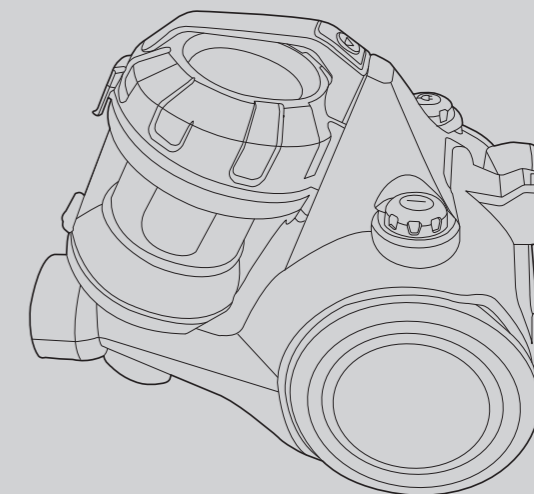


morphyrichards
 smart ideas for your home



Essentials Bagless Cylinder Vacuum Cleaner - Model 980563 / 980571

Please read and keep these instructions for future use



Contact us

Helpline

If you are having a problem with your appliance, please call our Helpline, as we are more likely to be able to help than the store you purchased the item from. Please have the product name, model number and serial number to hand when you call to help us deal with your enquiry quicker.

IRE Helpline: +353 1 8424833

For competitions, product hints and tips and more join us at

www.morphyrichards.co.uk/blog

www.facebook.com/morphyrichardsuk

[@loveyourmorphy](https://www.twitter.com/loveyourmorphy)

www.morphyrichards.com

* Register online for your 2 year guarantee. See back of this instruction book for details. (UK and Ireland customers only)

Health and Safety

The use of any electrical appliance requires the following common sense safety rules.

Please read these instructions carefully before using the product.

- **WARNING: Whenever the cleaner is in use, due to the risk of entrapment in rotating parts, keep loose clothing, hair, fingers etc. away from the brush bar, nozzle and any hand-held accessories.**
- **WARNING: Disconnect from the mains supply before carrying out any routine maintenance, such as cleaning any blockages, changing any filters or accessing the floor nozzle.**
- This appliance can be used by persons with reduced physical, sensory or mental capabilities, or lack of experience and knowledge, if they have been given supervision or instruction concerning the use of the appliance in a safe way and understand the hazards involved.
- Children shall not play with the appliance.
- Cleaning and user maintenance shall not be undertaken by children without supervision.

Personal safety

- **WARNING: Only lift the product by the handles (4).**
- Always disconnect the appliance from the mains supply after use.
- Never use in the presence of explosive liquid or vapours.
- Never pick up inflammable or poisonous liquids such as petrol, copier toner or other volatile substances. Never pick up acids, asbestos or asbestos dust.
- Never touch the plug or power cord with wet hands.
- Do not immerse the plug, power cord or cleaner in water or other liquid.
- The appliance must never be left running unsupervised.

Location

- Do not use or keep this product outside.
- Do not store the appliance near hot surfaces eg. ovens or heating appliances.

Mains cable

- If the power cord is damaged, it must be replaced by the manufacturer, its service agent, or similarly qualified person to avoid a hazard.

- Do not allow the mains lead to become strained or run this appliance over it.

Product safety

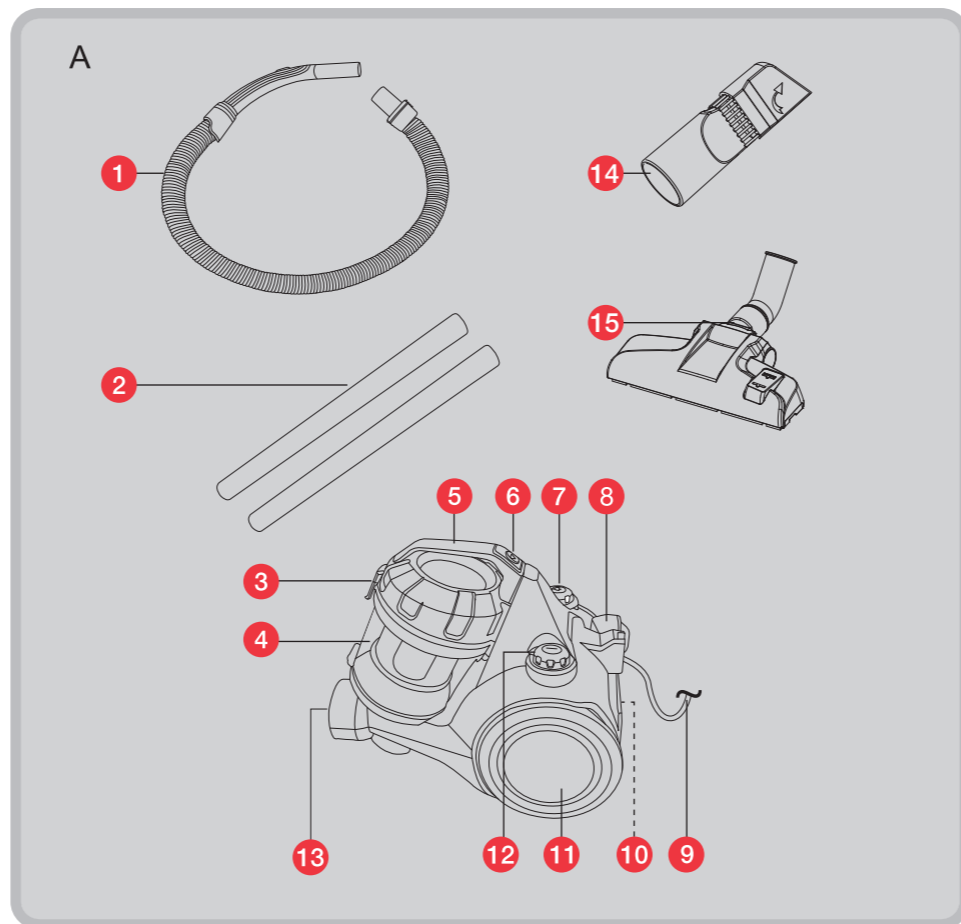
- Never use the appliance without the filters being installed.
- Never use the appliance to vacuum hot ashes, broken glass, sharp objects or liquids.
- Use only Dimplex spare parts and accessories.
- Never modify the cleaner in any way.

- Repairs to electrical appliances are only to be undertaken by trained professionals. Unprofessional repairs can be dangerous for users.

Electrical requirements

- Check that the voltage on the rating plate of your appliance corresponds with your house electricity supply which must be A.C. (Alternating Current).
- Should the fuse in the mains plug require changing, a 13 amp BS1362 fuse must be fitted.

Product overview



Features

- | | |
|------------------------------|---------------------------------|
| (1) Hose and Handle | (8) Holder for Hard Floor Brush |
| (2) 2 pcs Plastic Tube | (9) Power Cord with Power Plug |
| (3) Top Lid Lock | (10) Motor Filter |
| (4) Dust Container | (11) Wheel |
| (5) Handle | (12) On/off Button |
| (6) Container Release Button | (13) Hose Intake |
| (7) Cable Winder Button | (14) 2 in 1 Crevice Tool |
| | (15) Main Brush |

Intended Use

- This appliance is only intended for vacuuming of dust, lint and general dirt on soft and hard surfaces. Do not use it for vacuuming ashes, sharp objects e.g. glass or to suck up liquids or other flammable substances.
- The appliance is intended for private indoor use only.
- Use the appliance only as described in this manual.
- No liability will be accepted for damage resulting from improper use or non-compliance with this manual.

Before First Use

- Carefully remove all packaging materials and retain for future use.
- Check for transport damages.
- Clean the appliance (Cleaning and Maintenance).
- Check whether the dust container is correctly in place (Cleaning and Maintenance).
- **WARNING - DANGER OF SUFFOCATION!** Children should not play with the packaging materials, as they pose a risk of swallowing and suffocation!

Assembly

Step 1:

- Insert the flexible hose into the hose intake at the front of the appliance. There should be a click sound when the hose is correctly inserted.

Step 2:

- Insert the handle of the flexible hose into the wider end of the plastic tube.

Step 3:

- Insert the plastic tube into the connector of the hard floor brush (or one of the other accessories).
- **Note:** The accessories can be attached directly to the flexible hose.

Operation

Step 1:

- Pull out the power cord until the yellow marking on the cord appears. Pull no further.
- Connect the power plug to a suitable electrical outlet.

Step 2:

- Press the on/off button to switch on the appliance.

Step 3:

- Use the suction power control on the flexible hose handle to increase/decrease suction power.

Step 4:

- Press the on/off button to power off the appliance.
- Unplug the cable and press the cable winder button to wind up the power cable.
- After use, the hard floor brush can be attached to the back of the appliance using the foreseen hard floor brush holder .

Notice: Hold the power cable with one hand and slowly guide it while it rolls back into storage.

Cleaning and Maintenance

Warning: Always disconnect the power plug from the electrical outlet before cleaning or storing.

Cleaning

- Remove any accessory attached to the extension tube or flexible hose.
- Clean the appliance and accessories with a slightly moistened cloth. Do not allow any liquid to enter the appliance's interior.
- Never use corrosive detergents, wire brushes, abrasive scourers, metal or sharp utensils to clean the appliance or accessories.
- Carefully dry the appliance and accessories after cleaning.
- To dislodge the flexible hose from the hose intake press the release button and pull the hose out.

Emptying the Dust Container

- Regularly empty the dust container to avoid damage to the appliance.